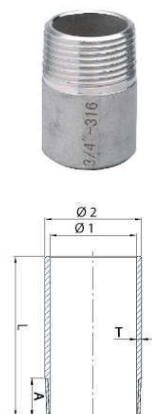
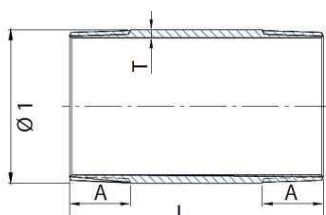




INFORMACIÓN TÉCNICA-TECHNICAL INFORMATION				
REF.	DN	DIMENSIONES- DIMENSIONS		Peso aprox / Weight approx (KG)
		L (mm)	D (mm)	
31613018	1/8"	17	14,9	0,03
3161300C	1/4"	19	17,5	0,04
31613038	3/8"	22	22,0	0,06
3161300M	1/2"	27	27,0	0,095
31613034	3/4"	32	32,0	0,155
31613001	1"	38	39,5	0,245
3161301C	1 1/4"	45	49,0	0,335
3161301M	1 1/2"	48	55,0	0,53
31613002	2"	57	67,0	0,725
3161302M	2 1/2"	69	84,0	1,17
-	3"	78	98,5	1,695
-	4"	96	123,5	3,04

**NIPLE ROSCADO INOXIDABLE 316 F<sup>a</sup>149**  
 STAINLESS STEEL WELDING NIPPLE


INFORMACIÓN TÉCNICA-TECHNICAL INFORMATION									
REF.	DN	DIMENSIONES- DIMENSIONS							Peso aprox / Weight approx (KG)
		A (mm)	L (mm)	C (mm)	E (mm)	Ø1 (mm)	Ø2 (mm)	ØT (mm)	
-	1/8" X 30 mm	11	30	0,5	1,0	6,0	10,0	2,0	0,01
3161490C	1/4" X 30 mm	11	30	0,5	1,5	9,6	14,0	2,2	0,015
31614938	3/8" X 30 mm	12	30	0,5	1,5	12,6	17,2	2,3	0,02
3161490M	1/2" X 35 mm	15	35	0,5	1,8	15,86	21,4	2,77	0,03
31614934	3/4" X 40 mm	17	40	0,5	1,8	20,96	26,7	2,87	0,055
31614901	1" X 40 mm	20	40	0,5	2,2	26,64	33,4	3,38	0,08
3161491C	1 1/4" X 50 mm	21	50	0,5	2,2	35,08	42,2	3,56	0,115
3161491M	1 1/2" X 50 mm	21	50	0,5	2,2	40,94	48,3	3,68	0,130
31614902	2" X 50 mm	26	50	0,75	2,2	52,58	60,4	3,91	0,18
-	2 1/2" X 60 mm	28	60	0,75	2,2	62,78	76,0	3,65	0,33
31614903	3" X 70 mm	31	70	0,75	2,2	77,92	88,9	4,05	0,45
31614904	4" X 80 mm	35	80	0,75	2,2	102,56	114,3	4,5	0,85


**BOBINA ROSCADA INOXIDABLE 316 F<sup>a</sup>530**  
 STAINLESS STEEL BARRIEL NIPPLE


INFORMACIÓN TÉCNICA-TECHNICAL INFORMATION								
REF.	DN	DIMENSIONES- DIMENSIONS						Peso aprox / Weight approx (KG)
		A (mm)	L (mm)	C (mm)	E (mm)	Ø1 (mm)	T (mm)	
3165300C	1/4" X 40 mm	11	40	0,5	1,5	13,72	2,24	0,02
31653038	3/8" X 40 mm	12	40	0,5	1,5	17,13	2,31	0,025
3165300M	1/2" X 60 mm	15	60	0,5	1,8	21,34	2,50	0,055
31653034	3/4" X 60 mm	17	60	0,5	1,8	26,67	2,50	0,075
31653001	1" X 60 mm	20	60	0,5	2,2	33,40	3	0,095
3165301C	1 1/4" X 80 mm	22	80	0,5	2,2	42,16	3	0,18
3165301M	1 1/2" X 80 mm	22	80	0,5	2,2	48,26	3	0,26
31653002	2" X 100 mm	26	100	0,5	2,2	60,33	3,5	0,355

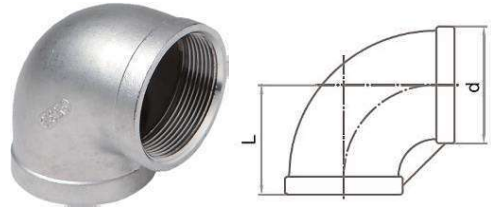
**CODO 90° ROSCADO INOXIDABLE 316**  
**F<sup>a</sup>90 H/H**  
**THREADED STAINLESS STEEL FITTING**  
**ELBOW 90° F/F**

VALVULERIA Y FERRETERIA NAVAL

**S** UMINISTROS **B** BENI SL

INFORMACIÓN TÉCNICA-TECHNICAL INFORMATION

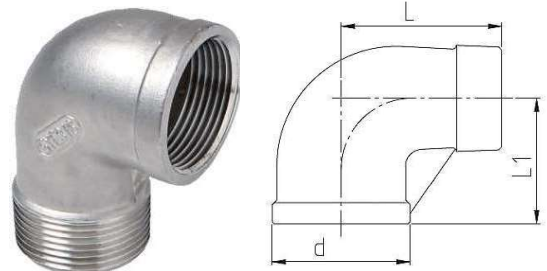
REF.	DN	DIMENSIONES- DIMENSIONS		Peso aprox / Weight approx (KG)
		c (mm)	d(mm)	
31609018	1/8"	17	14,6	0,020
3160900C	1/4"	19	17,5	0,025
31609038	3/8"	23	22,0	0,045
3160900M	1/2"	27	27,0	0,075
31609034	3/4"	32	32,0	0,110
31609001	1"	38	39,5	0,175
3160901C	1 1/4"	45	49,0	0,285
3160901M	1 1/2"	48	55,0	0,375
31609002	2"	57	67,0	0,530
3160902M	2 1/2"	69	84,0	0,945
31609003	3"	78	98,5	1,355
31609004	4"	96	123,5	2,405



**CODO 90° ROSCADO INOXIDABLE 316**  
**F<sup>a</sup>92 M/H**  
**THREADED STAINLESS STEEL FITTING**  
**ELBOW 90° M/F**

INFORMACIÓN TÉCNICA-TECHNICAL INFORMATION

REF.	DN	DIMENSIONES- DIMENSIONS			Peso aprox /Weight approx (KG)
		L1 (mm)	L (mm)	d (mm)	
31609218	1/8"	17	26	14,6	0,020
3160920C	1/4"	19	28	17,5	0,030
31609238	3/8"	23	32	22,0	0,045
3160920M	1/2"	27	36	27,0	0,075
31609234	3/4"	32	42	32,0	0,105
31609201	1"	38	53	39,5	0,180
3160921C	1 1/4"	45	59	49,0	0,270
3160921M	1 1/2"	48	64	55,0	0,360
31609202	2"	57	72	67,0	0,600
3160922M	2 1/2"	69	87	84,0	0,960
31609203	3"	78	102	98,5	1,540

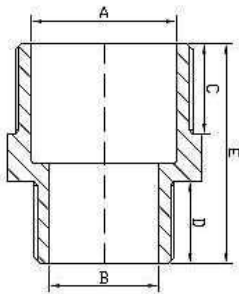


**CODO 45° INOXIDABLE 316 F<sup>a</sup>120 H/H**  
**THREADED STAINLESS STEEL FITTING**  
**ELBOW F/F 45°**

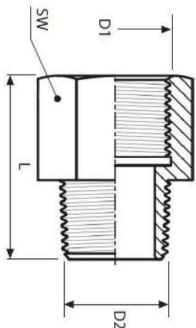
INFORMACIÓN TÉCNICA-TECHNICAL INFORMATION

REF.	DN	DIMENSIONES- DIMENSIONS		Peso aprox / Weight approx (KG)
		C (mm)	D (mm)	
3161200C	1/4"	17	17,5	0,025
31612038	3/8"	19	22,0	0,040
3161200M	1/2"	21	27,0	0,069
31612034	3/4"	25	32,0	0,095
31612001	1"	29	39,5	0,165
3161201C	1 1/4"	33	49,0	0,215
3161201M	1 1/2"	37	55,0	0,305
31612002	2"	42	67,0	0,475
3161202M	2 1/2"	48	84,0	0,790
31612003	3"	54	98,5	1,110





INFORMACIÓN TÉCNICA-TECHNICAL INFORMATION							
REF.	DN	DIMENSIONES- DIMENSIONS					Peso aprox / Weight approx (KG)
		A (mm)	B (mm)	C (mm)	D (mm)	E (mm)	
42450C18	1/4" x 1/8"	8,8	5,8	13,3	11,0	30,0	0,015
42453818	3/8" x 1/8"	11,0	5,7	14,5	10,0	33,0	0,030
-	3/8" x 1/4"	11,1	8,4	14,7	13,0	35,0	0,030
42450M0C	1/2" x 1/4"	14,7	8,2	17,0	13,9	38,0	0,045
42450M38	1/2" x 3/8"	14,7	11,0	17,0	14,5	39,8	0,050
4245340C	3/4" x 1/4"	20,2	8,4	18,0	13,0	40,0	0,070
42453438	3/4" x 3/8"	20,6	11,2	18,0	15,0	42,2	0,070
4245340M	3/4" x 1/2"	20,0	14,5	18,0	16,8	43,5	0,070
4245010M	1" x 1/2"	26,2	14,5	18,9	17,0	47,0	0,105
42450134	1" x 3/4"	26,2	20,2	18,7	18,0	48,0	0,110
42451C0M	1 1/4" x 1/2"	34,7	14,7	21,2	17,2	50,0	0,165
42451C34	1 1/4" x 3/4"	34,7	20,2	21,2	18,0	51,0	0,165
42451C01	1 1/4" x 1"	34,5	26,0	21,5	19,5	52,0	0,175
42451M0M	1 1/2" x 1/2"	40,0	14,6	21,5	16,0	50,5	0,205
42451M34	1 1/2" x 3/4"	40,2	20,0	22,2	18,0	52,5	0,210
42451M01	1 1/2" x 1"	39,6	26,0	22,2	19,0	53,2	0,210
42451M1C	1 1/2" x 1 1/4"	40,2	34,8	22,0	21,0	55,0	0,215
42450201	2" x 1"	51,4	26,1	26,0	19,3	57,7	0,315
4245021C	2" x 1 1/4"	51,4	34,6	25,7	21,4	60,4	0,325
4245021M	2" x 1 1/2"	51,2	40,1	26,0	22,3	60,4	0,325
-	2 1/2" x 1"	64,5	26,5	31,0	20,0	64,5	0,575
-	2 1/2" x 1 1/4"	64,5	35,0	31,0	21,0	65,5	0,575
-	2 1/2" x 1 1/2"	64,5	40,3	31,0	22,0	66,5	0,575
42452M02	2 1/2" x 2"	65,5	51,3	31,0	26,0	70,7	0,600
42450302	3" x 2"	77,5	51,3	33,0	26,0	72,0	0,760
-	3" x 2 1/2"	77,5	64,5	33,0	31,0	77,6	0,855

**REDUCCION ROSCADA INOXIDABLE 316**  
**F<sup>a</sup>246**  
**STAINLESS STEEL HEXAGON BUSHINGS**


INFORMACIÓN TÉCNICA-TECHNICAL INFORMATION					
REF.	D1	D2	L (mm)	SW (mm)	Peso aprox / Weight approx (KG)
I2461C38	1/4"	1/8"	26,0	15,0	0,02
I2460C38	3/8"	1/4"	28,5	17,0	0,04
-	3/8"	3/8"	31,0	21,0	0,04
I2460M38	1/2"	3/8"	37,5	26,0	0,06
-	1/2"	1/2"	37,5	32,0	0,07
I246340M	3/4"	1/2"	46,0	38,0	0,10
-	3/4"	3/4"	49,0	50,0	0,10
I2460134	1"	3/4"	51,0	54,0	0,13
-	1"	1"	57,0	68,0	0,13

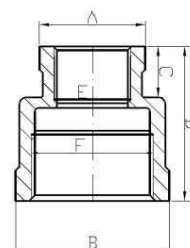
MANGUITO REDUCIDO ROSCADO INOXIDABLE 316  
F<sup>a</sup>240  
STAINLESS STEEL REDUCING SOCKET

VALVULERIA Y FERRETERIA NAVAL



INFORMACIÓN TÉCNICA-TECHNICAL INFORMATION

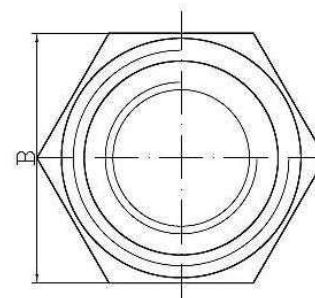
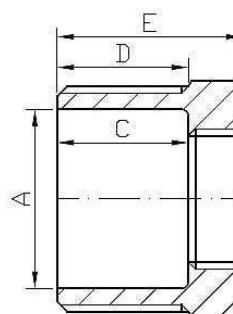
REF.	DN	DIMENSIONES- DIMENSIONS						Peso aprox / Weight approx (KG)
		A (mm)	B (mm)	C (mm)	D (mm)	E (mm)	F (mm)	
42400C18	1/4" X 1/8"	14,4	21,0	9,0	26,0	8,0	11,0	0,03
4240380C	3/8" X 1/4"	17,5	23,9	9,5	30,0	11,0	14,3	0,04
42400M0C	1/2" X 1/4"	17,6	27,5	13,0	34,0	11,0	18,0	0,05
42400M38	1/2" X 3/8"	20,8	27,3	12,8	34,0	14,3	18,0	0,055
-	3/4" X 1/4"	17,8	32,5	10,0	34,4	11,0	23,5	0,065
424034M	3/4" X 1/2"	27,0	32,0	14,0	37,0	18,0	23,5	0,075
4240010M	1" X 1/2"	27,5	40,5	18,0	42,0	18,0	29,4	0,12
42400134	1" X 3/4"	32,6	40,5	15,0	42,0	23,5	29,5	0,13
42401C01	1 1/4" X 1"	40,5	49,5	16,0	48,6	29,4	38,0	0,185
42401M01	1 1/2" X 1"	40,0	55,0	21,0	52,0	29,5	43,6	0,24
42401M1C	1 1/2" X 1 1/4"	49,3	55,0	23,5	52,5	38,0	43,6	0,23
42400201	2" X 1"	40,0	67,5	21,0	57,0	29,5	55,0	0,34
4240021C	2" X 1 1/4"	49,3	67,5	23,5	58,0	38,0	55,0	0,345
4240021M	2" X 1 1/2"	55,5	67,5	23,5	58,0	43,6	55,0	0,37
42402M02	2 1/2" X 2"	67,5	84,5	28,0	65,0	54,0	70,5	0,54
-	3" X 2"	67,5	98,0	28,0	72,5	54,0	82,0	0,665

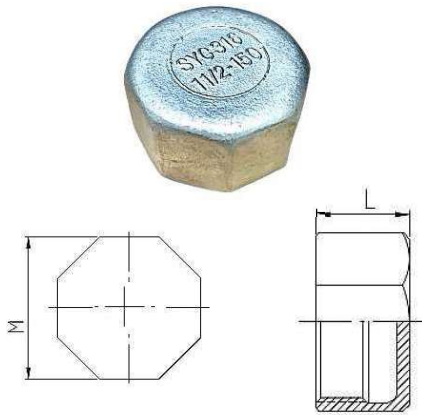


REDUCCION ROSCADO INOXIDABLE 316 F<sup>a</sup>241  
STAINLESS STEEL REDUCING BUSH

INFORMACIÓN TÉCNICA-TECHNICAL INFORMATION

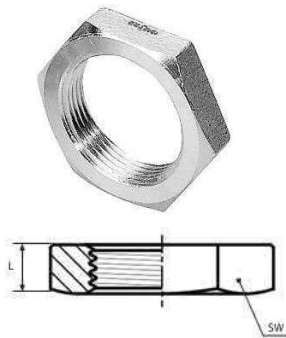
REF.	DN	DIMENSIONES- DIMENSIONS					Peso aprox / Weight approx (KG)
		A (mm)	B (mm)	C (mm)	D (mm)	E (mm)	
42410C18	1/4" x 1/8"	8,4	15,0	12,0	12,5	19,0	0,010
42413818	3/8" x 1/8"	11,0	19,0	13,0	14,0	20,3	0,025
4241380C	3/8" x 1/4"	11,0	19,0	13,0	14,0	20,3	0,020
42410M0C	1/2" x 1/4"	15,0	22,5	15,0	17,0	23,7	0,035
42410M38	1/2" x 3/8"	15,0	22,5	14,0	17,0	23,7	0,030
4241340C	3/4" x 1/4"	20,5	29,0	16,4	18,0	26,0	0,065
42413834	3/4" x 3/8"	20,5	29,0	16,3	18,0	26,0	0,060
42413C0M	3/4" x 1/2"	20,5	29,0	15,8	18,0	26,0	0,050
4241010M	1" x 1/2"	26,0	35,5	17,4	19,0	27,0	0,085
42410134	1" x 3/4"	26,0	35,5	13,6	19,0	27,0	0,070
42411C0M	1 1/4" x 1/2"	34,5	43,6	20,2	20,5	30,0	0,145
42411C34	1 1/4" x 3/4"	34,5	43,6	18,2	20,5	30,0	0,135
42411C01	1 1/4" x 1"	34,5	43,6	16,0	20,5	30,0	0,115
-	1 1/2" x 1/2"	40,0	51,0	22,0	22,0	31,0	0,200
42411M34	1 1/2" x 3/4"	40,0	51,0	20,0	22,0	31,0	0,195
42411M01	1 1/2" x 1"	40,0	51,0	17,0	22,0	31,0	0,180
42411M1C	1 1/2" x 1 1/4"	40,0	51,0	15,5	22,0	31,0	0,120
-	2" x 1/2"	51,0	62,4	26,0	26,0	35,0	0,265
-	2" x 3/4"	51,0	62,4	23,0	26,0	35,0	0,330
42410201	2" x 1"	51,0	62,4	21,0	26,0	35,0	0,330
4241021C	2" x 1 1/4"	51,0	62,4	20,0	26,0	35,0	0,270
4241021M	2" x 1 1/2"	51,0	62,4	17,8	26,0	35,0	0,235
-	2 1/2" x 1"	64,5	77,8	27,0	27,0	40,0	0,635
42412M1C	2 1/2" x 1 1/4"	64,5	77,2	25,0	27,0	40,0	0,600
42412M1M	2 1/2" x 1 1/2"	64,5	77,8	25,0	27,0	40,0	0,570
42412M02	2 1/2" x 2"	64,5	77,8	24,0	27,0	39,5	0,425
42410302	3" x 2"	77,2	91,2	27,3	33,0	44,0	0,800
-	3" x 2 1/2"	77,2	91,2	20,0	33,0	44,0	0,560
-	4" x 2"	101,3	116,6	27,0	36,0	48,0	0,650
-	4" x 2 1/2"	101,3	116,6	25,0	36,0	48,0	1,415
-	4" x 3"	101,3	116,6	23,3	36,0	48,0	1,205



**TAPON ROSCADO INOXIDABLE 316 F<sup>a</sup>300**  
 THREADED STAINLESS STEEL FITTING HEXAGONAL  
 CAP


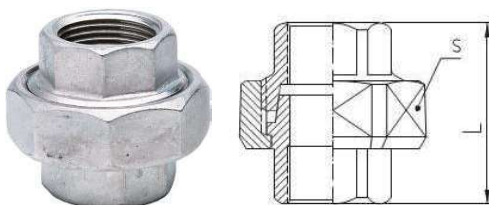
## INFORMACIÓN TÉCNICA-TECHNICAL INFORMATION

REF.	DN	DIMENSIONES- DIMENSIONS		Peso aprox / Weight approx (KG)
		L (mm)	M (mm)	
31630018	1/8"	15	15,5	0,010
3163000C	1/4"	15	15,5	0,015
31630038	3/8"	16	19,0	0,020
3163000M	1/2"	20	27,0	0,050
31630034	3/4"	22	31,5	0,065
31630001	1"	26	38,5	0,095
3163001C	1 1/4"	28	47,5	0,160
3163001M	1 1/2"	32	53,0	0,225
31630002	2"	34	65,0	0,350
3163002M	2 1/2"	39	81,5	0,560
31630003	3"	41	95,0	0,785
31630004	4"	43	121,0	1,085

**CONTRATUERCA INOXIDABLE 316 F<sup>a</sup>312**  
 THREADED STAINLESS STEEL FITTING BACK NUT


## INFORMACIÓN TÉCNICA-TECHNICAL INFORMATION

REF.	DN	L (mm)	SW (mm)	Peso aprox / Weight approx (KG)
31631218	1/8"	6,2	14,6	0,01
31631214	1/4"	7,0	23,0	0,02
31631238	3/8"	8,0	26,0	0,03
3163120M	1/2"	10,0	31,0	0,04
31631234	3/4"	11,0	37,0	0,06
31631201	1"	10,0	46,0	0,08
3163121C	1 1/4"	11,0	55,0	0,11
3163121M	1 1/2"	12,0	63,0	0,15

**RACOR INOXIDABLE 316 F<sup>a</sup>340 H/H**  
 THREADED STAINLESS STEEL FITTING – UNION  
 CONICAL SEAT F/F


## INFORMACIÓN TÉCNICA-TECHNICAL INFORMATION

REF.	DN	DIMENSIONES- DIMENSIONS		Peso aprox / Weight approx (KG)
		H (mm)	L (mm)	
31634018	1/8"	30,0	25,0	0,055
3163400C	1/4"	33,5	29,0	0,065
31634038	3/8"	36,5	34,0	0,090
3163400M	1/2"	39,5	38,0	0,115
31634034	3/4"	42,5	46,0	0,205
31634001	1"	50,0	53,0	0,255
3163401C	1 1/4"	54,0	66,0	0,400
3163401M	1 1/2"	58,0	72,0	0,525
31634002	2"	65,0	88,0	0,815
3163402M	2 1/2"	75,0	108,0	1,360
31634003	3"	83,0	123,5	1,540
31634004	4"	110,0	148,0	2,560



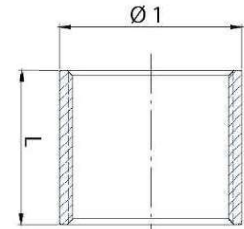
MANGUITO ROSCADO INOXIDABLE 316 F<sup>a</sup>270  
STAINLESS STEEL SOCKET

VALVULERIA Y FERRETERIA NAVAL

SUMINISTROS BENI SL

INFORMACIÓN TÉCNICA-TECHNICAL INFORMATION

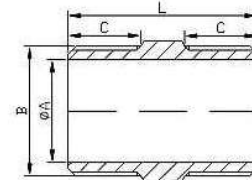
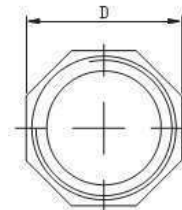
REF.	DN	DIMENSIONES- DIMENSIONS		Peso aprox / Weight approx (KG)
		Ø1 (mm)	L (mm)	
31627018	1/8"	14,0	17,0	0,01
3162700C	1/4"	18,0	25,0	0,025
31627038	3/8"	21,3	26,0	0,03
3162700M	1/2"	26,0	34,0	0,06
31627034	3/4"	31,5	35,5	0,07
31627001	1"	39,0	42,0	0,125
3162701C	1 1/4"	48,0	47,0	0,19
3162701M	1 1/2"	54,0	47,0	0,22
31627002	2"	66,0	56,0	0,28
3162702M	2 1/2"	81,0	64,0	0,41
31627003	3"	94,0	70,0	0,515
31627004	4"	120,0	82,0	0,845



MAMELON ROSCADO INOXIDABLE 316 F<sup>a</sup>280  
STAINLESS STEEL HEXAGON NIPPLE

INFORMACIÓN TÉCNICA-TECHNICAL INFORMATION

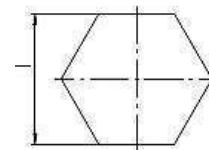
REF.	DN	DIMENSIONES- DIMENSIONS					Peso aprox / Weight approx (KG)
		A (mm)	C (mm)	D (mm)	L (mm)	Cara Face	
31628018	1/8"	5,10	12,00	13,00	30,30	6	0,015
31628034	1/4"	7,90	13,40	15,00	32,02	6	0,020
31628038	3/8"	10,70	14,80	19,00	36,70	6	0,035
3162800M	1/2"	14,90	16,44	22,00	41,70	6	0,050
3162800C	3/4"	19,90	18,46	27,30	44,94	6	0,075
31628001	1"	26,00	18,60	35,30	48,10	8	0,120
3162801C	1 1/4"	34,50	20,60	44,60	53,40	8	0,180
3162801M	1 1/2"	39,90	21,50	50,60	55,50	8	0,220
31628002	2"	51,00	25,60	62,50	64,20	8	0,330
3162802M	2 1/2"	64,50	30,80	78,00	76,00	8	0,670
31628003	3"	77,20	33,30	91,70	79,70	8	0,860
31628004	4"	101,30	36,00	118,00	85,70	8	1,345



TAPON ROSCADO INOXIDABLE 316 F<sup>a</sup>290  
THREADED STAINLESS STEEL FITTING PLUG

INFORMACIÓN TÉCNICA-TECHNICAL INFORMATION

REF.	DN	DIMENSIONES- DIMENSIONS		Peso aprox / Weight approx (KG)
		H (mm)	L (mm)	
31629018	1/8"	17	12	0,010
3162900C	1/4"	18	15	0,015
31629038	3/8"	20	18	0,025
3162900M	1/2"	22	23	0,035
31629034	3/4"	25	28	0,055
31629001	1"	26	35	0,085
3162901C	1 1/4"	30	44	0,125
3162901M	1 1/2"	31	50	0,165
31629002	2"	35	62	0,265
3162902M	2 1/2"	38	78	0,460
31629003	3"	42	92	0,615
3162901M	4"	49	116	1,090



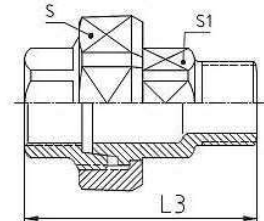
RACOR INOXIDABLE 316 F<sup>3</sup>341 M/H  
 THREADED STAINLESS STEEL FITTING – UNION  
 CONICAL SEAT M/F

VALVULERIA Y FERRETERIA NAVAL

SUMINISTROS BENI SL

INFORMACIÓN TÉCNICA-TECHNICAL INFORMATION

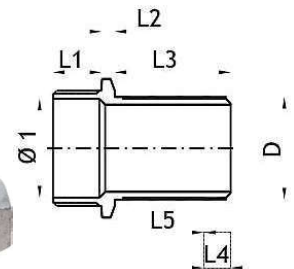
REF.	DN	DIMENSIONES- DIMENSIONS			Peso aprox / Weight approx (KG)
		S1 (mm)	L3 (mm)	S (mm)	
-	1/8"	18	38,0	25	0,060
3163410C	1/4"	18	44,0	29	0,070
31634138	3/8"	22	47,5	34	0,095
3163410M	1/2"	26	54,0	38	0,145
3163413C	3/4"	32	59,0	46	0,230
31634101	1"	40	68,0	53	0,295
3163411C	1 1/4"	49	70,0	66	0,510
3163411M	1 1/2"	56	78,5	72	0,600
31634102	2"	68	90,0	88	0,995
3163412M	2 1/2"	84	104,0	108	1,645
31634103	3"	98	113,0	92	2,065
31634104	4"	126	146,0	116	3,445



ESPIGO INOXIDABLE 316 F<sup>3</sup>399  
 STAINLESS STEEL HOSE NIPPLE

INFORMACIÓN TÉCNICA-TECHNICAL INFORMATION

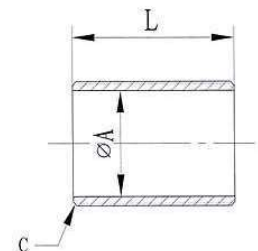
REF.	DN	DIMENSIONES- DIMENSIONS							Peso aprox / Weight approx (KG)
		Ø1 (mm)	D (mm)	L1 (mm)	L2 (mm)	L3 (mm)	L4 (mm)	L5 (mm)	
I3991808	1/8" x 8 mm.	5,5	8,0	8,0	4,0	26	6,0	0,4	0,015
I3990C09	1/4" x 9 mm.	8,0	9,0	10,5	4,0	28	6,5	0,4	0,020
I3993813	3/8" x 11 mm.	11,5	11,5	11,0	5,0	33	7,5	0,4	0,040
I3990M15	1/2" x 15 mm.	15,0	15,0	14,5	5,0	38	8,5	0,4	0,045
I3993420	3/4" x 20 mm.	20,5	20,0	15,5	5,5	45	10,5	0,4	0,075
I3990130	1" x 27 mm.	26,0	27,0	18,0	6,0	52	12,0	0,4	0,120
I3991C33	1 1/4" x 33 mm.	34,5	33,0	20,5	6,5	52	12,0	0,4	0,170
I3991M39	1 1/2" x 40 mm.	40,0	39,5	20,5	6,5	56	13,0	0,4	0,285
I3990251	2" x 53 mm.	51,0	52,0	25,0	7,0	60	14,0	0,4	0,435
I3992M66	2 1/2" x 66 mm.	65,5	67,0	27,0	7,0	65	14,0	0,4	0,625
I3990380	3" x 80 mm.	77,5	80,0	30,0	7,5	70	15,0	0,4	0,915
I3990410	4" x 105 mm.	102,0	105,0	36,0	8,0	73	15,0	0,4	1,385



ROSCA INTERIOR INOXIDABLE 316 F<sup>3</sup>531  
 STAINLESS STEEL INNER CAP

INFORMACIÓN TÉCNICA-TECHNICAL INFORMATION

REF.	DN	DIMENSIONES- DIMENSIONS			Peso aprox / Weight approx (KG)
		A (mm)	L (mm)	C (mm)	
3165310C	1/4"	9,24	22	0,5	0,005
31653138	3/8"	12,53	24	0,5	0,010
3165310M	1/2"	16,34	30	1,0	0,020
31653134	3/4"	21,67	34	1,0	0,030
31653101	1"	27,40	40	1,0	0,050
3165311C	1 1/4"	36,16	42	1,5	0,070
3165311M	1 1/2"	42,26	42	1,5	0,080
31653103	2"	53,33	52	1,5	0,135



ACOPLE KAMLOK TIPO A	
REF. TIPO	PULGADAS TIPO
K3160A01	1/2"
K3160A34	3/4"
K3160A01	1"
K3160A1C	1 1/4"
K3160A1M	1 1/2"
K3160A02	2"
K3160A2M	2 1/2"
K3160A03	3"
K3160A04	4"



**TIPO A:**  
KAMLOCK MACHO A ROSCA HEMBRA

ACOPLE KAMLOK TIPO B	
REF. TIPO	PULGADAS TIPO
K316HB0M	1/2"
K316HB01	1"
K316HB34	3/4"
K316HB1C	1 1/4"
K316HB1M	1 1/2"
K316HB02	2"
K316HB2M	2 1/2"
K316HB03	3"



**TIPO B:**  
KAMLOCK HEMBRA A ROSCA MACHO

ACOPLE KAMLOK TIPO C	
REF. TIPO	PULGADAS TIPO
K3160C01	1/2"
K3160C34	3/4"
K3160C01	1"
K3160C1M	1 1/2"
K3160C02	2"
K3160C2M	2 1/2"
K3160C03	3"
K3160C04	4"



**TIPO C:**  
KAMLOCK HEMBRA PARA MANGUERA

ACOPLE KAMLOK TIPO D	
REF. TIPO	PULGADAS TIPO
K316HD01	1/2"
K316HD34	3/4"
K316HD01	1"
K316HD1C	1 1/4"
K316HD1M	1 1/2"
K316HD02	2"
K316HD2M	2 1/2"
K316HD03	3"
K316HD04	4"



**TIPO D:**  
KAMLOCK HEMBRA A ROSCA HEMBRA

ACOPLE KAMLOK TIPO E	
REF. TIPO	PULGADAS TIPO
K316ME01	1/2"
K316ME34	3/4"
K316ME01	1"
K316ME1M	1 1/2"
K316ME02	2"
K316ME2M	2 1/2"
K316ME03	3"
K316ME04	4"



**TIPO E:**  
KAMLOCK MACHO PARA MANGUERA

ACOPLE KAMLOK TIPO F	
REF. TIPO	PULGADAS TIPO
K3160F01	1/2"
K3160F34	3/4"
K3160F01	1"
K3160F1M	1 1/2"
K3160F02	2"
K3160F2M	2 1/2"
K3160F03	3"
K3160F04	4"



**TIPO F:**  
KAMLOCK MACHO A ROSCA MACHO

**NOTA:** TAMBIÉN SE FABRICAN EN BRONCE/LATÓN Y ALUMINIO.